

R4ASQNC

4" Square LED Adjustable Recessed Downlight: Non-IC, StopAire® Housing

Specifications/Features

Housing/Mounting

Specification grade 4" adjustable new construction non-IC, air tight housing delivering up to 3100Lm.
Requires minimum 3" clearance around fixture from insulation material.
Thermal protection provided in case of improper insulation use.
16-gauge galvanized steel housing painted matte black inside and out.
Dual nailer hanger bars are adjustable for 16" and 24" center joists (14-1/4" to 24-1/2").
Nailer bars enable easy installation and may be extended to rest on T-bar ceilings. Optional clip-on T-bar hangers also available.
Quick-connect design enables easy installation and removal of LED Module. Module can be accessed from above or below the ceiling.
Drivers are fully accessible from above or below the ceiling.
Housing features a removable cover when LED module and driver access from above the ceiling is required.
Adjustable mechanism is constructed of 16-gauge sheet metal and die-cast aluminum; painted matte black.
Fully lockable adjustment mechanism allows 45° of tilt with white graduation marks every 15° for consistent aiming, plus 360° for rotational adjustment.
Housing aperture can be adjusted 1/4" in each direction, as well as 11° of angular adjustment (5.5° per side) post installation to ease fixture alignment.
Housing can be used in slope ceiling applications.

Electrical

Driver with Class 2 output. RoHS compliant.
Output over voltage, over-current and short circuit protection.
Approved for through-circuit wiring. Max.: (8) 12 AWG (4in/4out). Pre-wired junction box with knockouts. (7) 1/2" and (4) 3/4" knockouts

LED Module

Consists of a high output multi-chip LED array arranged into a single LED package, enabling precise optical control.
Module consists of a die-cast aluminum heat-sink with formed aluminum housing and two spring steel supports. An engineering grade thermoplastic housing with a spring steel clip supports the precision glass TIR optic. Optics produce 21°, 44°, and 63° beam distributions. Optics are interchangeable and can be field replaced.
Available in two wattage/lumen packages: 36W/2800Lm and 43W/3100Lm.
Excellent fixture-to-fixture color consistency with a 3-step MacAdam Ellipse tolerance.
System designed and rated for 50,000 hours at 70% lumen maintenance.
Optional FA-57 accessory holder clip can support two media.

Dimming

All R4ASQ adjustable downlights are available for non-dimming and dimming applications.
For a list of compatible dimmers, refer to the [Dimming Specifications sheet](#).

Trims

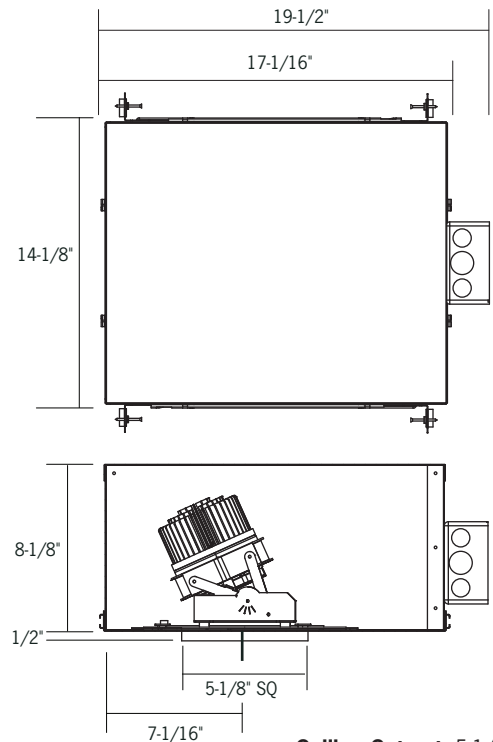
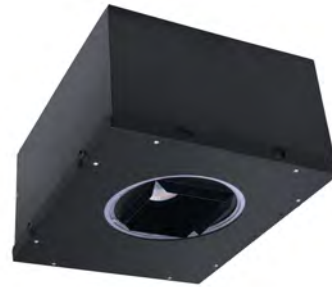
Specification Grade trims are available featuring a high quality Alzak™ finish option; optically designed for reduced glare while maintaining maximum lumen output.
Note: R4ASQ series and R4SQ series trims are not compatible with each other.

Warranty

This complete fixture is covered by ConTech's full five (5) year replacement guarantee after date of purchase.

Labels/Usage

cCSAus Certified using US (UL) and Canadian (CSA) standards.
Suitable for damp locations.
Conforms to Washington State Energy Code (WSEC) for low air infiltration. Tested in accordance with ASTM E283 (2.0 CFM or less).
Chicago Plenum CCEA listed.
Assembled in the USA.



Ceiling Cut-out: 5-1/4" Sq.
Ceiling Thickness: 1/2" – 1-1/4"

	Series 5	Series 6
Input Wattage (W)	36	43
Input Current (A) 120/277	.30/.13	.36/.17
Input Voltage		
Dimming (Triac, ELV, 0-10V)	120V AC, 50/60Hz 277V AC, 50/60Hz	
Lutron HiLume® Dimming	120V AC, 50/60Hz	
Lutron Eco-System® Dimming	120V AC, 50/60Hz 277V AC, 50/60Hz	
eldoLED ECOdrive/SOLOdrive	120V AC, 50/60Hz 277V AC, 50/60Hz	
Color Temp	2700K/3000K/3500K/4000K	
CRI Standard/High	83 (80min) / 90+	
Driver		
Power Factor	> 0.90	
THD	< 20%	
Dimming		
Triac, ELV, 0-10V	10-100%	
Lutron®	1-100%	
eldoLED ECOdrive	1-100%	
eldoLED SOLOdrive	0.1-100%	

R4ASQNC

4" Square LED Adjustable Recessed Downlight: Non-IC, StopAire® Housing

Ordering Information

Example Order:

NOTE: For Series-1 (10W/900Lm), Series-2 (14W/1200Lm), Series-3 (20W/1700Lm), Series-4 (28W/2300Lm) packages, use Type R4ASQIC housing

Housing	LED Series	Color Temp	Electrical	Electrical/Dimming	Beam Dist.	Options
<input type="text" value="R4ASQNC"/>	<input type="text" value="5"/>	<input type="text" value="27K"/>	<input type="text" value="12"/>	<input type="text" value="D1"/>	<input type="text" value="S"/>	<input type="text" value="ER3"/>
R4ASQNC	5 - 36W, 2800lm 6 - 43W, 3100lm	27K - 2700K 30K - 3000K 35K - 3500K 40K - 4000K 27KC - 2700K, 90+ CRI 30KC - 3000K, 90+ CRI 35KC - 3500K, 90+ CRI 40KC - 4000K, 90+ CRI	12 - 120V 27 - 277V	D1 - TRIAC, ELV, 0-10V Dimming D3 - 120V Lutron Hi-lume Dimming D4 - Lutron EcoSystem Dimming D6 - eldoLED ECOdrive, 0-10V, 1% Dimming D7 - eldoLED ECOdrive, DALI, 1% Dimming D8 - eldoLED SOLOdrive, 0-10V, 0.1% Dimming D9 - eldoLED SOLOdrive, DALI, 0.1% Dimming	S - Spot M - Medium F - Flood	ER³ - Factory Installed 7W/200mA Emergency Battery Backup (Remote Test Switch)

1. TRIAC and ELV dimming for 120V only.
2. Lutron Hi-lume dimming only available in 120V.
3. Emergency battery backup option cannot be used in Chicago Plenum application: 600 Lumen nominal average for series 5 or 6.

Accessories

Standard Hanger Bars Supplied with Housing

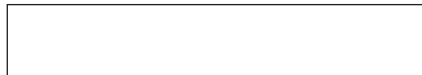
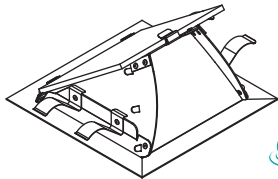


- HB-30** - T-Bar Hanger Set
- RL-KIT** - Commercial Mounting Brackets (install with self-drilling screws - supplied by others)
- HB-24** - 27" Flat Hanger Bars for RL-KIT
- HBC-24** - 25" C-Channel Hanger Bars for RL-KIT in Grid Ceiling Construction
- ADJOPT-S** - TIR Glass Optic, Spot
- ADJOPT-M** - TIR Glass Optic, Medium
- ADJOPT-F** - TIR Glass Optic, Flood
- FA-57** - Black Accessory Holder Clip; Accepts Two (2) Media
- LA-36-83MM** - 3-3/8" Diameter Honeycomb Louver, FA-57 required
- LF20-** 86MM** - 3-3/8" Diameter Lenses, FA-57 required

**Color/Pattern Legend

-A (Amber), -B (Blue), -G (Green), -LB (Light Blue), -R (Red), -RO (Rose), -Y (Yellow), -UV (Optivex UV Filter)

Trims



C4304SQ-(CLR*, -PL*, -WHT)

Specification grade angle-cut reflector with solite lens: clear specular, platinum, or painted matte white. Wet location certified.
 Aperture: 4-1/2" SQ; Trim Flange: 5-3/4" SQ

R4ASQNC

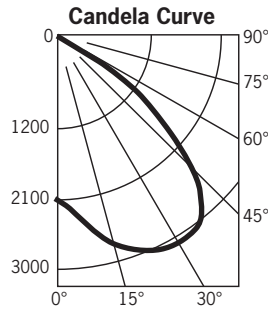
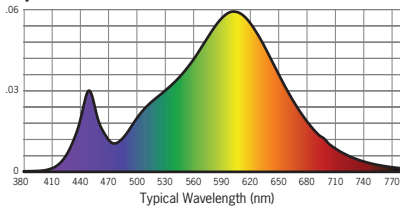
4" Square LED Adjustable Recessed Downlight:
Non-IC, StopAire® Housing

Photometrics

R4ASQNC630K12DF/C4304SQ-CLR

Designed for 50,000 Hour Lamp Life¹; LM-63 Test No. G17051813

Luminaire aimed 30° from Nadir
Light Output (Fixture Delivered Lumens): 2862
Total Watts@120V: 42.7
Lumens Per Watt: 67.0
Color Rendering Index (CRI)²: 81
Color Temperature (CCT)³: 2941K
Spectral Power Distribution Chart⁴



Candlepower Summary

FROM 0	CANDELA	LUMENS
0	2148	
5	2315	219
15	2781	538
25	3073	705
35	3084	816
45	2486	752
55	1280	424
65	33	14
75	3	3
85	0	0
95	0	

Intensity Distribution

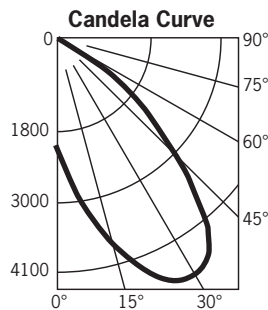
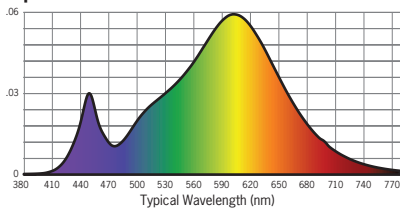
DISTANCE (FT.)	FOOTCANDLES (FC)	BEAM DIAMETER (FT.)
4'	134.3	6.3 x 4.2
6'	59.7	9.4 x 6.3
8'	33.6	12.5 x 8.3
10'	21.5	15.7 x 10.4
12'	14.9	18.8 x 12.5
14'	11.0	21.9 x 14.6

Beam Distribution: 63°

R4ASQNC630K12DM/C4304SQ-CLR

Designed for 50,000 Hour Lamp Life¹; LM-63 Test No. G17051607

Luminaire aimed 30° from Nadir
Light Output (Fixture Delivered Lumens): 3192
Total Watts@120V: 42.7
Lumens Per Watt: 74.8
Color Rendering Index (CRI)¹: 81
Color Temperature (CCT)²: 2941K
Spectral Power Distribution Chart³



Candlepower Summary

FROM 0	CANDELA	LUMENS
0	1922	
5	2465	199
15	3737	593
25	4737	947
35	4788	1159
45	3220	921
55	1568	498
65	70	26
75	3	3
85	0	0
95	0	

Intensity Distribution

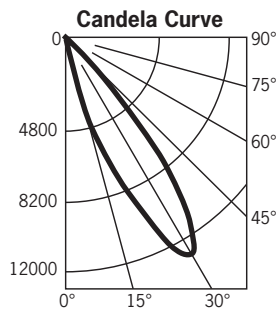
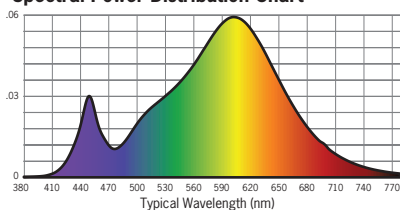
DISTANCE (FT.)	FOOTCANDLES (FC)	BEAM DIAMETER (FT.)
4'	120.1	3.6
6'	53.4	5.3
8'	30.0	7.1
10'	19.2	8.9
12'	13.3	10.7
14'	9.8	12.4

Beam Distribution: 44°

R4ASQNC630K12DS/C4304SQ-CLR

Designed for 50,000 Hour Lamp Life¹; LM-63 Test No. G17051714

Luminaire aimed 30° from Nadir
Light Output (Fixture Delivered Lumens): 2429
Total Watts@120V: 42.7
Lumens Per Watt: 56.9
Color Rendering Index (CRI)¹: 81
Color Temperature (CCT)²: 2941K
Spectral Power Distribution Chart³



Candlepower Summary

FROM 0	CANDELA	LUMENS
0	805	
5	1340	83
15	4307	481
25	10719	1693
35	10882	2209
45	1876	472
55	63	23
65	12	6
75	5	5
85	1	0
95	0	

Intensity Distribution

DISTANCE (FT.)	FOOTCANDLES (FC)	BEAM DIAMETER (FT.)
4'	50.3	2.2
6'	22.4	3.3
8'	12.6	4.4
10'	8.1	5.5
12'	5.6	6.6
14'	4.1	7.7

Beam Distribution: 21°

Multiplication Factors

CCT	STD CRI	HIGH CRI	SERIES 5	WHT/PL REFLECTORS	WHITE BAFFLE
2700K	0.94	0.70	0.88	1.0	0.94
3000K	N/A	0.75	0.88	1.0	0.94
3500K	1.0	0.81	0.88	1.0	0.94
4000K	1.0	0.87	0.88	1.0	0.94

1. Dependent on surrounding temperatures
2. Accuracy of rendering colors
3. Color appearance of light source
4. Colors present within the light source