

R4ASQIC

4" Square LED Adjustable Recessed Downlight: Insulated Ceiling, StopAire® Housing

Specifications/Features

Housing/Mounting

Specification grade 4" adjustable new construction IC, air tight housing delivering up to 2300Lm.

Housing is rated for Insulated Ceiling (IC) and StopAire® applications. For use in direct contact with insulation materials.

16-gauge galvanized steel housing painted matte black inside and out.

Dual nailer hanger bars are adjustable for 16" and 24" center joists (14-1/4" to 24-1/2").

Nailer bars enable easy installation and may be extended to rest on T-bar ceilings.

Optional clip-on T-bar hangers also available.

Quick-connect design enables easy installation and removal of LED Module. Module can be accessed from above or below the ceiling.

Drivers are fully accessible from above or below the ceiling.

Housing features a removable cover when LED module and driver access from above the ceiling is required.

Adjustable mechanism is constructed of 16-gauge sheet metal and die-cast aluminum; painted matte black.

Fully lockable adjustment mechanism allows 45° of tilt with white graduation marks every 15° for consistent aiming, plus 360° for rotational adjustment.

Housing aperture can be adjusted 1/4" in each direction, as well as 11° of angular adjustment (5.5° per side) post installation to ease fixture alignment.

Housing can be used in slope ceiling applications.

Electrical

Driver with Class 2 output. RoHS compliant.

Output over voltage, over-current and short circuit protection.

Approved for through-circuit wiring. Max.: (8) 12 AWG (4in/4out). Pre-wired junction box with knockouts. (8) 1/2" and (4) 3/4" knockouts.

LED Module

Consists of a high output multi-chip LED array arranged into a single LED package, enabling precise optical control.

Module consists of a die-cast aluminum heat-sink with formed aluminum housing and two spring steel supports. An engineering grade thermoplastic housing with a spring steel clip supports the precision glass TIR optic. Optics produce 21°, 44°, and 63° beam distributions. Optics are interchangeable and can be field replaced.

Available in four wattage/lumen packages: 10W/900Lm, 14W/1200Lm, 20W/1700Lm and 28W/2300Lm.

Excellent fixture-to-fixture color consistency with a 3-step MacAdam Ellipse tolerance.

System designed and rated for 50,000 hours at 70% lumen maintenance.

Optional FA-57 accessory holder clip can support two media.

Dimming

All R4ASQ adjustable downlights are available for non-dimming and dimming applications.

For a list of compatible dimmers, refer to the [Dimming Specifications sheet](#).

Trims

Specification Grade trims are available featuring a high quality Alzak™ finish option; optically designed for reduced glare while maintaining maximum lumen output.

Note: R4ASQ series and R4SQ series trims are not compatible with each other.

Warranty

This complete fixture is covered by ConTech's full five (5) year replacement guarantee after date of purchase.

Labels/Usage

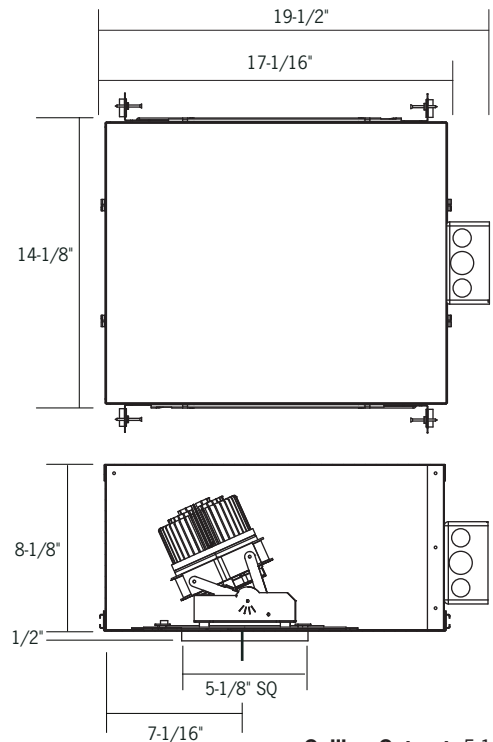
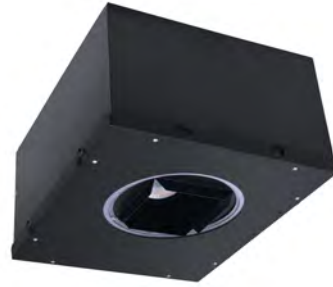
cCSAus Certified using US (UL) and Canadian (CSA) standards. Suitable for damp locations.

Conforms to Washington State Energy Code (WSEC) for low air infiltration.

Tested in accordance with ASTM E283 (2.0 CFM or less).

Chicago Plenum CCEA listed – not for use in Insulated Ceilings (IC).

Assembled in the USA.



Ceiling Cut-out: 5-1/4" Sq.
Ceiling Thickness: 1/2" – 1-1/4"

	Series 1	Series 2	Series 3	Series 4
Input Wattage (W)	10	14	20	28
Input Current (A) 120/277	.08/.04	.12/.06	.17/.08	.23/.11
Input Voltage				
Dimming (Triac, ELV, 0-10V)	90-305V AC, 50/60Hz			
Lutron HiLume® Dimming	120V AC, 50/60Hz			
Lutron Eco-System® Dimming	120-277V AC, 50/60Hz			
eldoLED ECOdrive	120-277V AC, 50/60Hz			
eldoLED SOLOdrive	120-277V AC, 50/60Hz			
Color Temp	2700K/3000K/3500K/4000K			
CRI Standard/High	83 (80min) / 90+			
Driver				
Power Factor	> 0.90			
THD	< 20%			
Dimming				
Triac, ELV, 0-10V	10-100%			
Lutron®	1-100%			
eldoLED ECOdrive	1-100%			
eldoLED SOLOdrive	0.1-100%			

R4ASQIC

4" Square LED Adjustable Recessed Downlight: Insulated Ceiling, StopAire® Housing

Ordering Information

Example Order:

Housing	LED Series	Color Temp	Electrical/Dimming	Beam Dist.	Options
<input type="text" value="R4ASQIC"/>	<input type="text" value="1"/>	<input type="text" value="27K"/>	<input type="text" value="MVD1"/>	<input type="text" value="S"/>	<input type="text" value="ER3.4"/>
R4ASQIC	1 - 10W, 900lm 2 - 14W, 1200lm 3 - 20W, 1700lm 4 - 28W, 2300lm	27K - 2700K 30K - 3000K 35K - 3500K 40K - 4000K 27KC - 2700K, 90+ CRI 30KC - 3000K, 90+ CRI 35KC - 3500K, 90+ CRI 40KC - 4000K, 90+ CRI	MVD1 - 120-277V TRIAC, ELV, 0-10V Dimming 12D3² - 120V Lutron HiLume Dimming MVD4 - 120-277V Lutron EcoSystem Dimming MVD6 - 120-277V eldoLED ECOdrive, 0-10V, 1% Dimming MVD7 - 120-277V eldoLED ECOdrive, DALI, 1% Dimming MVD8 - 120-277V eldoLED SOLOdrive, 0-10V, 0.1% Dimming MVD9 - 120-277V eldoLED SOLOdrive, DALI, 0.1% Dimming	S - Spot M - Medium F - Flood	ER^{3.4} - Factory Installed 7W/200mA Emergency Battery Backup (Remote Test Switch)

1. TRIAC and ELV Dimming for 120V only.
2. Lutron HiLume dimming only available in 120V.
3. Emergency Battery Backup option can be used in Insulated Ceilings (IC): 700 lumen nominal average for any series 1 through 4.
4. Emergency Battery Backup option cannot be used in Chicago Plenum application.

Accessories

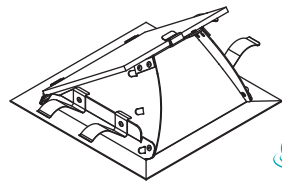
Standard Hanger Bars Supplied with Housing



- HB-30** - T-Bar Hanger Set
- RL-KIT** - Commercial Mounting Brackets (install with self-drilling screws - supplied by others)
- HB-24** - 27" Flat Hanger Bars for RL-KIT
- HBC-24** - 25" C-Channel Hanger Bars for RL-KIT in Grid Ceiling Construction
- ADJOPT-S** - TIR Glass Optic, Spot
- ADJOPT-M** - TIR Glass Optic, Medium
- ADJOPT-F** - TIR Glass Optic, Flood
- FA-57** - Black Accessory Holder Clip; Accepts Two (2) Media
- LA-36-83MM** - 3-3/8" Diameter Honeycomb Louver, FA-57 required
- LF20-** 86MM** - 3-3/8" Diameter Lenses, FA-57 required

****Color/Pattern Legend**
 -A (Amber), -B (Blue), -G (Green), -LB (Light Blue), -R (Red), -RO (Rose), -Y (Yellow), -UV (Optivex UV Filter)

Trims



C4304SQ-(CLR*, -PL*, -WHT)
 Specification grade angle-cut reflector with solite lens: clear specular, platinum, or painted matte white. Wet location certified.
 Aperture: 4-1/2" SQ; Trim Flange: 5-3/4" SQ

R4ASQIC

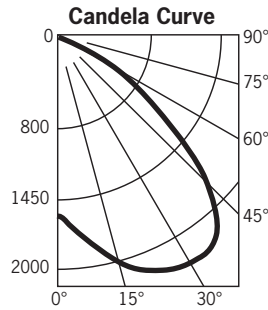
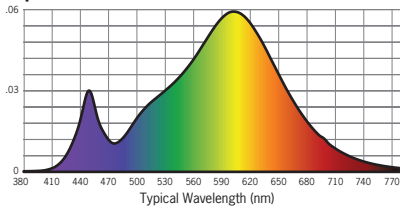
4" Square LED Adjustable Recessed Downlight:
Insulated Ceiling, StopAire® Housing

Photometrics

R4ASQIC430K12DF/C4304SQ-CLR

Designed for 50,000 Hour Lamp Life¹; LM-63 Test No. G17051812

Luminaire aimed 30° from Nadir
Light Output (Fixture Delivered Lumens): 2083
Total Watts@120V: 27.6
Lumens Per Watt: 75.5
Color Rendering Index (CRI)²: 81
Color Temperature (CCT)³: 2941K
Spectral Power Distribution Chart⁴



Candlepower Summary

FROM 0	CANDELA	LUMENS
0	1538	
5	1666	158
15	2006	390
25	2225	510
35	2243	593
45	1826	551
55	956	317
65	27	12
75	2	2
85	0	0
95	0	

Intensity Distribution

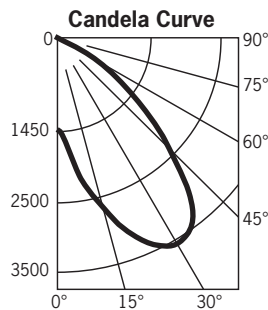
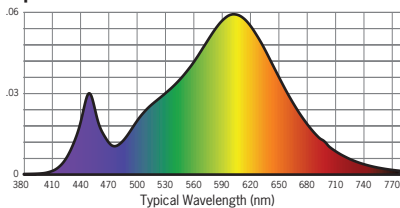
DISTANCE (FT.)	FOOTCANDLES (FC)	BEAM DIAMETER (FT.)
4'	96.1	6.3 x 4.2
6'	42.7	9.5 x 6.2
8'	24.0	12.7 x 8.3
10'	15.4	15.9 x 10.4
12'	10.7	19.0 x 12.5
14'	7.8	22.2 x 14.5

Beam Distribution: 63°

R4ASQIC430K12DM/C4304SQ-CLR

Designed for 50,000 Hour Lamp Life¹; LM-63 Test No. G17051609

Luminaire aimed 30° from Nadir
Light Output (Fixture Delivered Lumens): 2318
Total Watts@120V: 27.6
Lumens Per Watt: 84
Color Rendering Index (CRI)¹: 81
Color Temperature (CCT)²: 2941K
Spectral Power Distribution Chart³



Candlepower Summary

FROM 0	CANDELA	LUMENS
0	1400	
5	1787	145
15	2720	432
25	3454	690
35	3465	839
45	2328	666
55	1136	361
65	49	18
75	2	2
85	0	0
95	0	

Intensity Distribution

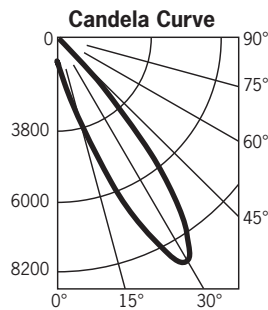
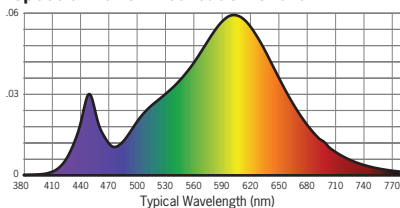
DISTANCE (FT.)	FOOTCANDLES (FC)	BEAM DIAMETER (FT.)
4'	87.5	3.6
6'	38.9	5.3
8'	21.9	7.1
10'	14.0	8.9
12'	9.7	10.7
14'	7.1	12.5

Beam Distribution: 44°

R4ASQIC430K12DS/C4304SQ-CLR

Designed for 50,000 Hour Lamp Life¹; LM-63 Test No. G17051715

Luminaire aimed 30° from Nadir
Light Output (Fixture Delivered Lumens): 1763
Total Watts@120V: 27.6
Lumens Per Watt: 63.9
Color Rendering Index (CRI)¹: 81
Color Temperature (CCT)²: 2941K
Spectral Power Distribution Chart³



Candlepower Summary

FROM 0	CANDELA	LUMENS
0	588	
5	982	61
15	3151	351
25	7840	1237
35	7878	1599
45	1366	344
55	44	16
65	8	4
75	3	3
85	0	0
95	0	

Intensity Distribution

DISTANCE (FT.)	FOOTCANDLES (FC)	BEAM DIAMETER (FT.)
4'	36.8	2.2
6'	16.3	3.3
8'	9.2	4.4
10'	5.9	5.5
12'	4.1	6.6
14'	3.0	7.7

Beam Distribution: 21°

Multiplication Factors

CCT	STD CRI	HIGH CRI	SERIES 1	SERIES 2	SERIES 3	WHT/PL REFLECTORS	WHITE BAFFLE
2700K	0.94	0.70	0.39	0.53	0.75	1.0	0.94
3000K	N/A	0.75	0.39	0.53	0.75	1.0	0.94
3500K	1.0	0.81	0.39	0.53	0.75	1.0	0.94
4000K	1.0	0.87	0.39	0.53	0.75	1.0	0.94

1. Dependent on surrounding temperatures
2. Accuracy of rendering colors
3. Color appearance of light source
4. Colors present within the light source