

DATE

PROJECT

TYPE

# CTL19 SERIES | Mini Stealth Wall Lighter Track Luminaires

## PHOTOMETRICS: CTL193V3D/CTL193H3D

**Footcandles on Wall: Track 3 Feet From Wall, 10 FT Mounting Height, Tilted 40 Degrees**

| Distance from Ceiling | Single Unit |      |      |      |      |      | Multiple Units |     |     |                |    |     |                |    |     |   |  |  |  |
|-----------------------|-------------|------|------|------|------|------|----------------|-----|-----|----------------|----|-----|----------------|----|-----|---|--|--|--|
|                       | 0 FT        | 1 FT | 2 FT | 3 FT | 4 FT | 5 FT | 4 FT on Center |     |     | 6 FT on Center |    |     | 8 FT on Center |    |     |   |  |  |  |
|                       | ▲           |      |      |      |      |      | ▲              |     | ▲   | ▲              |    |     | ▲              | ▲  | ▲   | ▲ |  |  |  |
| 1 FT                  | 77          | 71   | 42   | 17.8 | 5.1  | 2    | 82             | 84  | 82  | 78             | 26 | 78  | 77             | 10 | 77  |   |  |  |  |
| 2 FT                  | 140         | 127  | 76   | 33   | 14   | 5    | 154            | 152 | 154 | 141            | 66 | 141 | 140            | 28 | 140 |   |  |  |  |
| 3 FT                  | 114         | 106  | 73   | 37   | 17   | 8    | 131            | 147 | 131 | 117            | 75 | 117 | 114            | 34 | 114 |   |  |  |  |
| 4 FT                  | 73          | 69   | 54   | 33   | 17   | 9    | 90             | 107 | 90  | 77             | 66 | 77  | 73             | 34 | 73  |   |  |  |  |
| 5 FT                  | 43          | 42   | 36   | 25   | 15   | 8    | 59             | 71  | 59  | 48             | 51 | 48  | 45             | 31 | 45  |   |  |  |  |
| 6 FT                  | 26          | 26   | 23   | 18   | 13   | 8    | 39             | 46  | 39  | 31             | 36 | 31  | 28             | 25 | 28  |   |  |  |  |
| 7 FT                  | 16          | 16   | 15   | 12   | 9    | 6    | 26             | 30  | 26  | 21             | 25 | 21  | 18             | 19 | 18  |   |  |  |  |
| 8 FT                  | 11          | 10   | 10   | 9    | 7    | 4    | 17             | 20  | 17  | 14             | 17 | 14  | 12             | 13 | 12  |   |  |  |  |
| 9 FT                  | 7           | 7    | 7    | 6    | 5    | 4    | 12             | 13  | 12  | 10             | 12 | 10  | 9              | 10 | 9   |   |  |  |  |

▲ is beam center

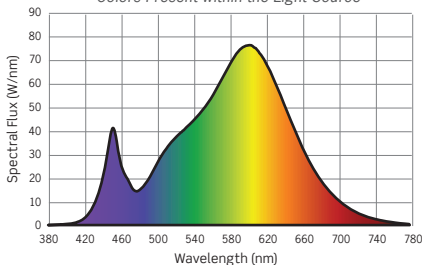
**Footcandles on Wall: Track 4 Feet From Wall, 10 FT Mounting Height, Tilted 40 Degrees**

| Distance from Ceiling | Single Unit |      |      |      |      |      | Multiple Units |     |    |                |    |    |                |    |    |   |  |  |  |
|-----------------------|-------------|------|------|------|------|------|----------------|-----|----|----------------|----|----|----------------|----|----|---|--|--|--|
|                       | 0 FT        | 1 FT | 2 FT | 3 FT | 4 FT | 5 FT | 4 FT on Center |     |    | 6 FT on Center |    |    | 8 FT on Center |    |    |   |  |  |  |
|                       | ▲           |      |      |      |      |      | ▲              |     | ▲  | ▲              |    |    | ▲              | ▲  | ▲  | ▲ |  |  |  |
| 1 FT                  | 36          | 35   | 27   | 16   | 8    | 3    | 43             | 54  | 43 | 37             | 32 | 37 | 36             | 15 | 36 |   |  |  |  |
| 2 FT                  | 68          | 65   | 50   | 29   | 15   | 8    | 83             | 100 | 83 | 71             | 59 | 71 | 69             | 30 | 69 |   |  |  |  |
| 3 FT                  | 77          | 74   | 59   | 38   | 20   | 10   | 97             | 118 | 97 | 83             | 75 | 83 | 78             | 40 | 78 |   |  |  |  |
| 4 FT                  | 62          | 60   | 51   | 35   | 21   | 12   | 83             | 102 | 83 | 69             | 71 | 69 | 64             | 42 | 64 |   |  |  |  |
| 5 FT                  | 45          | 43   | 39   | 29   | 19   | 12   | 64             | 77  | 64 | 52             | 58 | 52 | 47             | 38 | 47 |   |  |  |  |
| 6 FT                  | 31          | 30   | 28   | 22   | 16   | 11   | 47             | 55  | 47 | 37             | 45 | 37 | 33             | 32 | 33 |   |  |  |  |
| 7 FT                  | 21          | 20   | 19   | 17   | 13   | 9    | 34             | 39  | 34 | 27             | 33 | 27 | 24             | 26 | 24 |   |  |  |  |
| 8 FT                  | 14          | 14   | 13   | 12   | 10   | 8    | 24             | 27  | 24 | 20             | 24 | 20 | 17             | 20 | 17 |   |  |  |  |
| 9 FT                  | 10          | 10   | 10   | 9    | 8    | 6    | 18             | 19  | 18 | 15             | 17 | 15 | 13             | 15 | 13 |   |  |  |  |

▲ is beam center

**Spectral Power Distribution Chart**

Colors Present within the Light Source



Color Rendering Index (CRI): 82.5  
Accuracy of Rendering Colors

Color Temperature (CCT): 3105K  
Color Appearance of Light Source

Designed for 50,000 Hour Lamp Life Dependent on Surrounding Temperatures  
LM-79 Test: S20090401

| LED SERIES        | WATTAGE | TOTAL WATTS @ 120V | DELIVERED LUMENS | LM/W  | LM-63 TEST |
|-------------------|---------|--------------------|------------------|-------|------------|
| CTL190 - SERIES 0 | 14W     | 13.3W              | 1571.1Lm         | 118.4 | G20090401  |
| CTL191 - SERIES 1 | 19W     | 19.1W              | 2212.5Lm         | 116.1 | G20090303  |
| CTL192 - SERIES 2 | 28W     | 27.5W              | 3128.2Lm         | 113.6 | G20030302  |
| CTL193 - SERIES 3 | 35W     | 35.4W              | 3702.7Lm         | 104.6 | G20090301  |

## PHOTOMETRIC MULTIPLICATION FACTORS

Lumen output values fluctuate based on wattage, CCT and CRI. To estimate lumen output of the various CCT/CRI options, multiply 3000K (80 CRI min) results by the following:

| CCT MULTIPLIERS |         |          |       |         |          | OUTPUT MULTIPLIERS |              |              |
|-----------------|---------|----------|-------|---------|----------|--------------------|--------------|--------------|
| CCT             | STD CRI | HIGH CRI | CCT   | STD CRI | HIGH CRI | 14W/SERIES 0       | 19W/SERIES 1 | 28W/SERIES 2 |
| 2700K           | 0.95    | 0.74     | 3500K | 1.03    | 0.89     | 0.42               | 0.40         | 0.84         |
| 3000K           | N/A     | 0.85     | 4000K | 1.07    | 0.92     |                    |              |              |

DATE

PROJECT

TYPE

# CTL19 SERIES | Mini Stealth Wall Lighter Track Luminaires

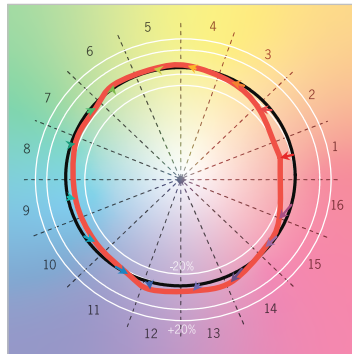
## PHOTOMETRICS

### TM-30 DATA: CTL193V3D/CTL193H3D

ANSI/IES TM-30-18 Color Rendition Report Test No. S21012902

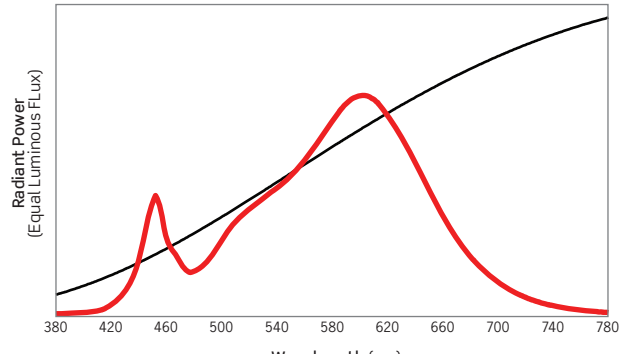
|          |        |
|----------|--------|
| $R_f$    | 85     |
| $R_g$    | 96     |
| CCT(K)   | 3105K  |
| $D_{uv}$ | 0.0008 |
| $u^I$    | 0.2467 |
| $v^I$    | 0.5204 |

Color Vector Graphic

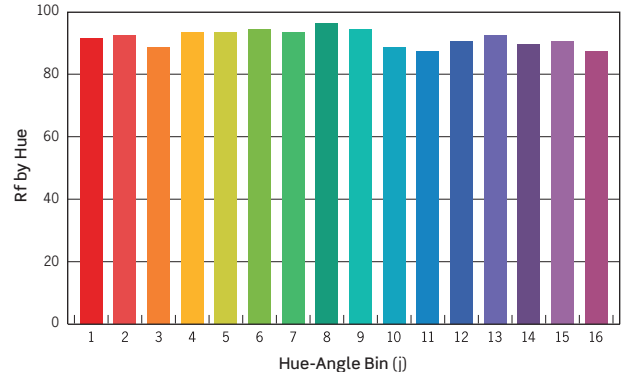
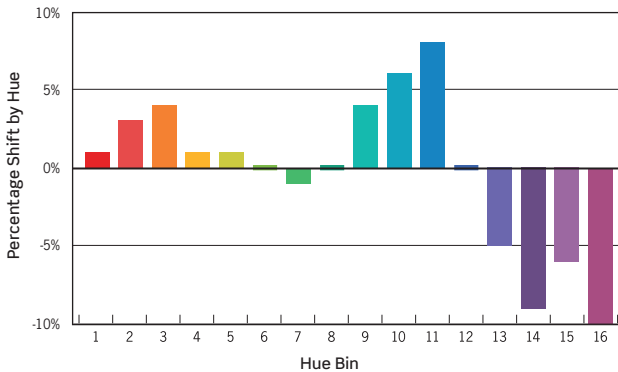


— Reference Illuminance  
— Test Source

Spectral Power Distribution Comparison



— Reference Illuminance  
— Test Source



| HUE BIN              | 1  | 2  | 3  | 4  | 5  | 6  | 7   | 8   | 9  | 10 | 11 | 12 | 13  | 14  | 15  | 16   |
|----------------------|----|----|----|----|----|----|-----|-----|----|----|----|----|-----|-----|-----|------|
| HUE SHIFT            | 0% | 3% | 5% | 3% | 3% | 0% | -2% | -1% | 2% | 6% | 8% | 2% | -3% | -7% | -6% | -10% |
| R <sub>f</sub> VALUE | 92 | 93 | 89 | 94 | 94 | 95 | 94  | 97  | 95 | 89 | 88 | 91 | 93  | 90  | 91  | 88   |

Colors are for visual orientation purposes only