

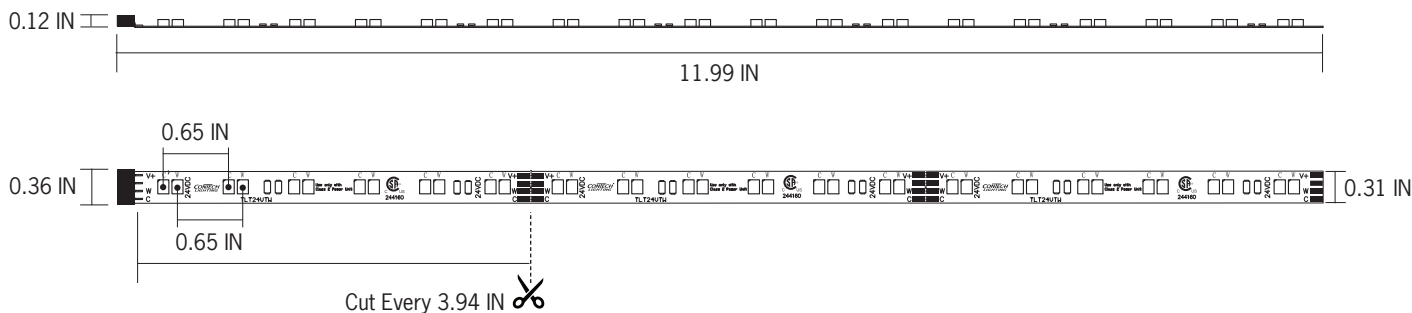
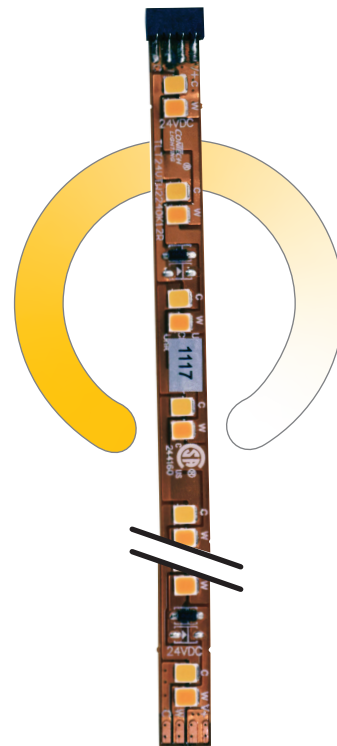
DATE

PROJECT

TYPE

TLT24VTW | 24V Tunable White Performance LED Tapelight

WATTAGE	4.3W/Ft (3000K, both LEDs on full power)
LUMEN OUTPUT	211Lm/ft (3000K, both LEDs on full power)
LED DENSITY	36 LED/Ft (0.65" Spacing)
COLOR TEMPERATURE	Tunable White Light: 2200K – 4000K
CRI	90+
SYSTEM RATING	50,000 Hours @ 70% Lumen Maintenance
INPUT VOLTAGE	24V
DIMMING	Dimmable using TW Controllers or DMX Interface
RUN LENGTH	27 Ft Max
AMBIENT OPERATING TEMP	–4° to 104°F (–20° to 40°C)
LISTING	cCSAus Certified to UL Standards Suitable for Dry or Damp Locations Not Suitable for Wet Locations
WARRANTY	Full replacement guarantee after date of purchase: – Five years when installed with Mounting Channel – Three years when installed without Mounting Channel



Ordering Information

Example Order:

TLT24VTW2240K12R

Tapelight Series	Output	Color Temp	Length/Quantity
TLT24V - 24VDC Performance LED Tapelight	TW - Tunable White	2240K - Tunable White Light: 2200K – 4000K	12 - 12 In Individual Segment 12R - 20 Ft Reel of 12 In Segments (20 Pieces Total, Actual Length 19.75 Ft) 30CR - 30 Ft Continuous Reel (Actual Length 29.35 Ft)

DATE

PROJECT

TYPE

TLT24VTW | 24V Tunable White Performance LED Tapelight

Product Details

Features

- Flexible, low voltage linear LED accent lighting system provides high quality illumination for many indoor applications
- Modular “plug and play” system, no need for field soldering
- Tunable White tapelight requires 24VDC Power Supply and Tunable White Controller (sold separately)
- Available in:
 - Individual 12 inch Segments with male and female connector ends
 - 20 Foot Reels of connected, individual 12 inch segments
 - 30 Foot Continuous Reels (no midconnectors) with one male and one female connector end
- TLT24VTW Series can be cut (on the cut lines) in 4 inch increments
- Easy to install using the 3M Double Sided Adhesive on each segment; tape can be directly mounted to most surfaces
- For additional thermal heatsinking, protection of the LEDs and an overall cleaner aesthetic, using the aluminum mounting channel is recommended
- For added protection of the LEDs and subtle diffusion and glare control, a clear or frosted lens may be used; lens must be used with the aluminum mounting channel and is easily installed

Performance Summary

- High output LEDs provide excellent luminous intensities at low drive currents
- Low power consumption and consistent, stable performance
- Tunable White Light from 2200K to 4000K, 90+ CRI
- Delivers 224 lumens at 2.2W/ft (4000K); 172 lumens at 2.2W/ft (2200K); and 211 lumens at 4.3W/ft (3000K, both LEDs on full power)
- Single run length up to 27 feet on one 96W power supply
- Dimmable using TW Controllers or DMX Interface
- System designed and rated for 50,000 hours at 70% lumen maintenance when mounted in ConTech aluminum mounting channel
- cCSAus Certified to UL standards
- Suitable for dry or damp locations
- Not suitable for wet locations

Warranty

- Covered by ConTech's full replacement guarantee after date of purchase:
 - Five (5) year replacement guarantee when tape light is installed using the Aluminum Mounting Channel
 - Three (3) year replacement guarantee when installed without the Aluminum Mounting Channel

Run Lengths

TLT24V 24V POWER SUPPLY INPUT: 24V DC	TLT24VTW TUNABLE WHITE ² 4.3W/FT	
WATTAGE	MAX RUN	MAX SPLIT
20W	4 FT	5 FT
36W	8 FT	9 FT
60W	14 FT	15 FT
90W	25 FT	40 FT
96W	27 FT	45 FT

- Max split can be split more than once, without exceeding the max single run in each leg.
- Max Run refers to the total single run of tapelight that can go on a power supply. Max Split refers to the total amount of tapelight that can go on a driver if it were separated into two runs.
- Max Run lengths are calculated with 12V or 24V DC at the start of the tape run. Voltage drop may occur if not using proper wire gauge. Please refer to the Voltage Drop and Wire Length Distance chart.
- Max Run lengths are calculated with no more than 30% light loss from the start of the tape run to the end of the tape run for optimal light consistency. If run lengths are extended beyond the recommended lengths noted above, there will be inconsistent light output and voltage drop.
- Overall distance of LED tape under load [illuminated sections]. If exceeded damage to the power supply and LED tape may result.

DATE

PROJECT

TYPE

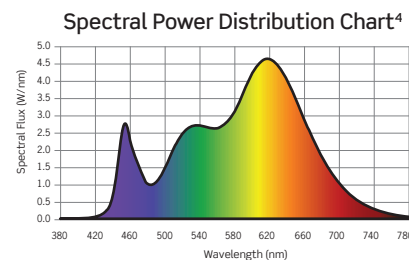
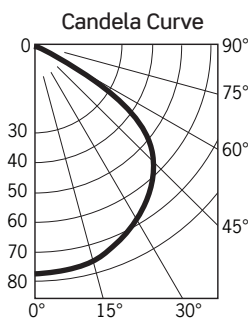
TLT24VTW | 24V Tunable White Performance LED Tapelight

Photometrics

TLT24VTW2240K12: BOTH LEDS ON; 3000K

Fixture Delivered Lumens: 211.2
Total Watts@120V: 7.26
Lumens Per Watt: 28.9
Center Beam Candle Power: 77.0
Beam Distribution: 115°
Spacing Criterion: 1.3
Color Rendering Index (CRI)¹: 95
Color Temperature (CCT)²: 3028K
Designed for 50,000 Hour Lamp Life³
LM-63 Test No. G21010710
LM-79 Test No. S21022418

DISTANCE (FT.)	FOOTCANDLES (FC)	BEAM DIAMETER (FT.)
2'	19.3	5.8
4'	4.8	11.6
6'	2.1	17.4
8'	1.2	23.2
10'	0.8	29.0
12'	0.5	34.8

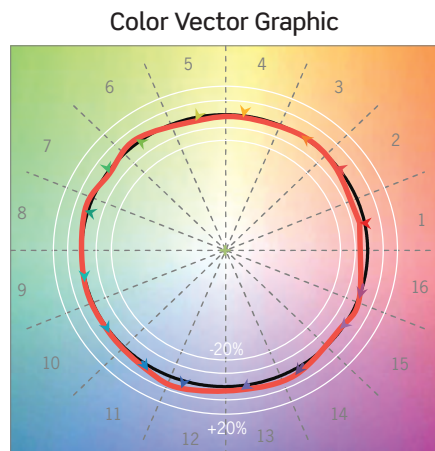


1. Accuracy of rendering colors 2. Color appearance of light source 3. Dependent on surrounding temperatures 4. Colors present within the light source

TM-30 Data

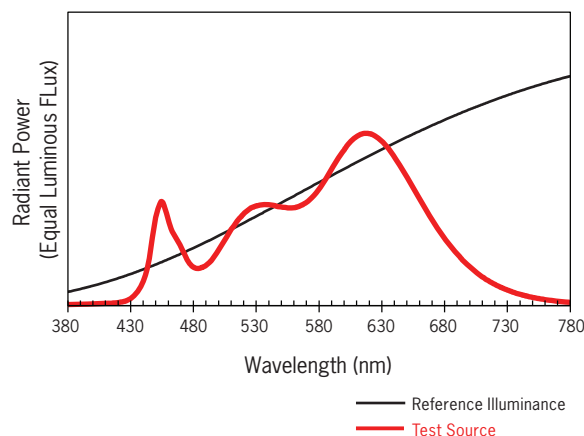
ANSI/IES TM-30-18 Color Rendition Report Test No. S21022418

R_f	92
R_g	101
CCT(K)	3028K
D_{uv}	-0.0032
u^I	0.2508
v^I	0.5164

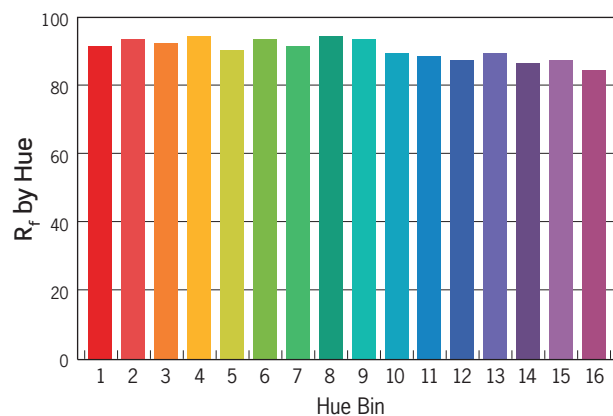
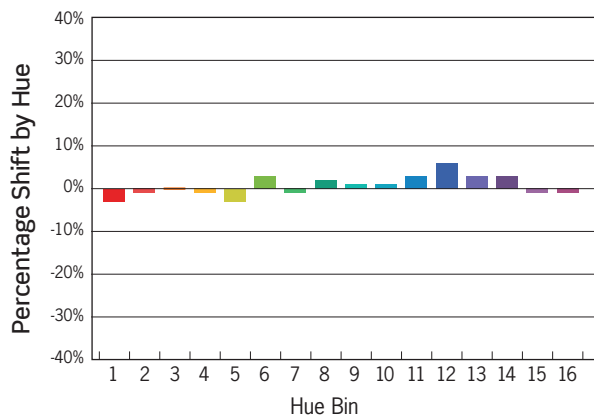


— Reference Illuminance — Test Source

Spectral Power Distribution Comparison



— Reference Illuminance
— Test Source



Colors are for visual orientation purposes only

DATE

PROJECT

TYPE

PERFORMANCE LED TAPELIGHT | 24V Power Supplies

24V Plug-In Power Supplies



TLP24VP Series

Plug-and-Play Power Supply

120VAC/24VDC. Includes AC wall plug and female power output barrel plug for easy installation. Class 2 listed.

For use with 24V LED Tapelight.

Power Supply/Wattage

TLP24VP36 - 36W

4-1/4" L x 2" W x 1-3/8" H

TLP24VP60 - 60W

4-1/2" L x 2" W x 1-3/8" H

TLP24VP96 - 96W

6-1/8" L x 2-3/8" W x 1-1/2" H

Quantity

24V Hardwire Power Supplies



TLP24VHW Series

Hardwire Power Supply

120VAC/24VDC. Includes stripped and tinned wire pigtailed on the input and output sides. MUST BE MAINTAINED WITHIN AN ENCLOSURE THAT MEETS LOCAL BUILDING CODES AND NEC (SUPPLIED BY OTHERS). 1 Ft Wire leads. Class 2 recognized.

For use with 24V LED Tapelight.



TLP24VHW * MV-ENC Series

Hardwire Class 2 Constant Voltage Driver

120 - 277VAC/24VDC Dimming and non-dimming Class 2 Constant Voltage LED Drivers. UL Listed enclosure with built-in junction boxes. No minimum load requirement. Auto-reset protection for short circuit and over-temperature. Over load protection in CC mode. 0-10V Dimming driver delivers smooth flicker free linear dimming down to 1% with most LEDs and a wide variety of compatible dimmers.

0-10V Driver dimming not recommended when using TW/RGB/RGBW controllers.

For use with 24V LED Tapelight.

TLP24VHW20

20W 24V 120VAC: 5-3/4" L x 1-1/2" W x 1-1/4" D

TLP24VHW60

60W 24V 120VAC: 6-1/3" L x 1-3/4" W x 1-1/4" D

TLP24VHW96

96W 24V 120VAC: 8-3/4" L x 2-2/3" W x 1-1/2" D

Quantity



TLP24VHW * -ENC Series

Hardwire Class 2 Enclosed Driver

120VAC/24VDC. Dimmable Class 2 listed driver. Compact self-enclosed driver with two (2) knockouts. Auto Reset and short circuit protection. Dimmable with standard MLV/Incandescent TRIAC (Leading Edge) dimmers; 8W Min. load required for smooth dimming.

TRIAC Driver dimming not recommended when using TW/RGB/RGBW controllers.

For use with 24V LED Tapelight.

TLP24VHW60MV-ENC

60W 24V 120-277VAC, Non-Dimming Driver

TLP24VHW60MVD2-ENC

60W 24V 120-277VAC, 0-10V Dimming Driver

TLP24VHW96MV-ENC

96W 24V 120-277VAC, Non-Dimming Driver

TLP24VHW96MVD2-ENC

96W 24V 120-277VAC, 0-10V Dimming Driver

Quantity

TLP24VHW20-ENC

20W 24V 120VAC: 6-3/4" L x 2-2/3" W x 1-1/4" D

TLP24VHW60-ENC

60W 24V 120VAC: 6-3/4" L x 2-2/3" W x 1-1/4" D

TLP24VHW96-ENC

96W 24V 120VAC: 6-3/4" L x 2-2/3" W x 1-1/4" D

TLP24VHW96-ENC277V

96W 24V 277VAC: 10" L x 3" W x 3" D

Quantity



L3D0 Series

Hardwire Hi-Lume Premier Driver

Enclosed Class 2 96W Constant Voltage Driver with dimming down to 0.1% with compatible controls. Universal 120 - 277VAC input. Output wattage range 25-96W.

For use with 24V LED Tapelight.

L3D0-96W24V-U

96W 24V 120-277VAC: 5.5" W x 2" H x 10.5" L

Quantity

DATE

PROJECT

TYPE

PERFORMANCE LED TAPELIGHT | 24V Tunable White (TW) Connectors

Hardwire Power Connectors



TLCIP12HWTW

24V Tunable White Male Power Connector

Includes wire pigtail end and one (1) male flex tape connector. Use with TW Controller and LED Power Repeater.

Use with 24V Tunable White (TW) Performance LED Tapelight only



TLCOP12HWTW

24V Tunable White Female Power Connector

Includes wire pigtail end and one (1) female flex tape connector. Use with TW Controller and LED Power Repeater.

Use with 24V Tunable White (TW) Performance LED Tapelight only

TLCIP12HWTW - 12 IN Tunable White
Hardwire Male Power Connector

Quantity

TLCOP12HWTW - 12 IN Tunable White
Hardwire Female Power Connector

Quantity

Linear Connectors



TLCM * RGB Series

Bridge Connector

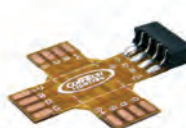
Blank section used to bridge gaps where LEDs are not necessary.

Use with RGB and Tunable White (TW) Performance LED Tapelight only

TLCM2RGB - 2 IN
TLCM12RG - 12 IN

TLCM6BRGB - 6 IN

Quantity



TLCXRGB

Cross Connector

Used to connect up to four (4) tapelight segments. May be cut to create 2-way "L" connection or 3-way "T" connection.

Use with RGB and Tunable White (TW) Performance LED Tapelight only

TLCXRGB - RGB and Tunable White Cross Connector

Quantity



TLCFFRGB

Short Female-to-Female Connector

Used to connect male tapelight ends (when tapelight is cut two male ends remain).

Use with RGB and Tunable White (TW) Performance LED Tapelight only

TLCFFRGB - RGB and Tunable White
Short Female-to-Female Connector

Quantity

DATE

PROJECT

TYPE

PERFORMANCE LED TAPELIGHT | TLT Series Tunable White Controllers



TLPTWMTC

Tunable White Touch Controller

Dial Touch Controller, select color temperature by color circle. Speed and brightness control. Receiver power input 12-24VDC; Max current load 9A. 3Ax3 Channels; Max output power 108W (12V)/216W (24V).

5-5/16" L x 1-3/16" W x 7/8" H

Remote frequency: 433.92MHz

Remote dimensions: 4-1/8" L x 2-1/4" W x 3/8" H

Use with 24V Tunable White Performance LED Tapelight



TLPTWV2RF

Tunable White Premium Controller

Premium RF remote, push button control for color temperature, speed and brightness, pre-programmed scenes and two (2) programmable scenes.

Receiver power input, 12-24VDC

Max current load, 12A, 3Ax4 Channels

Max output power, 144W (12V)/288W (24V)

5" L x 1-3/8" W x 7/8" H

Remote frequency: 2.4GHz

Remote dimensions: 5-3/4" L x 1-5/8" W x 1/2" H

Use with 24V Tunable White Performance LED Tapelight

TLPRGBWTC - RGB/RGBW Touch Controller

Quantity

TLPTWV2RF - Tunable White Premium Controller

Quantity



TLPINT

DMX 512 CV Decoder

Designed to convert universal DMX 512 signal to PWM signal when used with a DMX 512 console (by others). Use with non-dimming tapelight power supplies.

Not UL listed for outdoor use.

6-3/16" L x 3-1/8" W x 1-5/8" D

Use with 12V or 24V Performance LED Tapelight; can control white, single color or RGB LEDs



TLPRTW

4-Channel Power Repeater

Enables synchronized control of multiple runs from one controller.

5-5/16" L x 1-3/4" W x 1-1/8" D

Use with 12V or 24V Static Color, TW, RGB or RGBW Performance LED Tapelight

TLPINT - 12V/24V DMX 512 CV Decoder

Quantity

TLPRTW - 12V/24V LED 4-Channel Power Repeater

Quantity

DATE

PROJECT

TYPE

PERFORMANCE LED TAPELIGHT | Mounting Channels and Accessories

Product Details

Aluminum Mounting Channel

- Provides excellent heat sinking and protection to the LEDs while ensuring a clean, straight run
- 6 Ft long, Silver or Black Aluminum
- Outdoor/Wet listed Performance LED TapeLight is not compatible with channel end caps or diffusion lenses, except when using the Deep Standard Channel

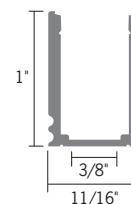
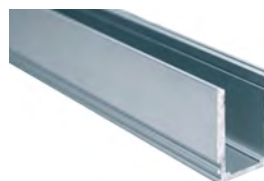
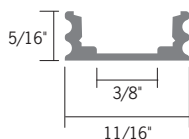
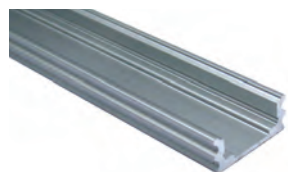
Channel Mounting Clips

- Four (4) Mounting clips and four (4) Philips head screws per package
- 24 Inches between clips recommended for most applications
- Stainless Steel

Channel End Caps

- Creates a clean finish to the mounting channel
- Two (2) end caps: one open, one closed
- ABS Plastic

Standard and Deep Mounting Channels



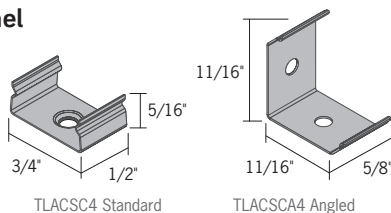
TLACS6 - 6 Ft Standard Channel, Aluminum
TLACS6-B - 6 Ft Standard Channel, Black

Quantity

TLAC8T6 - 6 Ft Deep Standard Channel, Aluminum
TLAC8T6-B - 6 Ft Deep Standard Channel, Black

Quantity

Standard and Deep Channel Mounting Clips



TLACSC4 - Four Standard Channel Mounting Clips
TLACSCA4 - Four Standard Channel Angled Mounting Clips

Quantity

Standard and Deep Channel End Caps



TLACSE2 - Two Standard Channel End Caps, Grey
TLACSE2-B - Two Standard Channel End Caps, Black
TLAC8TE2 - Two Deep Channel End Caps, Grey
TLAC8TE2-B - Two Deep Channel End Caps, Black

Quantity

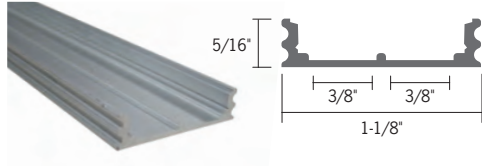
DATE

PROJECT

TYPE

PERFORMANCE LED TAPELIGHT | Mounting Channels and Accessories

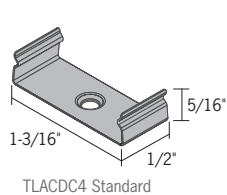
Double Wide Mounting Channel



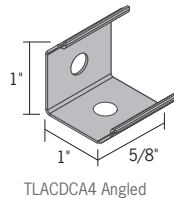
TLACD6 - 6 Ft Double Wide Channel, Aluminum
TLACD6-B - 6 Ft Double Wide Channel, Black

Quantity

Double Wide Channel Mounting Clips



TLACDC4 Standard



TLACDCA4 Angled

Double Wide Channel End Caps



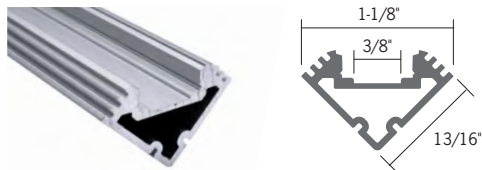
TLACDC4 - Four Double Wide Standard Mounting Clips
TLACDCA4 - Four Double Wide Angled Mounting Clips

Quantity

TLACDE2 - Two Double Wide End Caps, Grey
TLACDE2-B - Two Double Wide End Caps, Black

Quantity

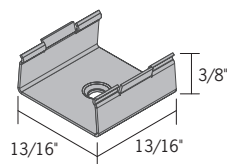
45° Angled Mounting Channel



TLACA6 - 6 Ft 45° Angled Channel, Aluminum
TLACA6-B - 6 Ft 45° Angled Channel, Black

Quantity

45° Angled Channel Mounting Clips



13/16"

45° Angled Channel End Caps



TLACAC4 - Four Angled Channel Mounting Clips

Quantity

TLACAE2 - Two Angled Channel End Caps, Grey
TLACAE2-B - Two Angled Channel End Caps, Black

Quantity

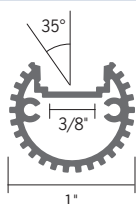
DATE

PROJECT

TYPE

PERFORMANCE LED TAPELIGHT | Mounting Channels and Accessories

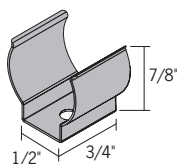
Round Mounting Channel



TLAC06 - 6 Ft Round Channel, Aluminum
TLAC06-B - 6 Ft Round Channel, Black

Quantity

Round Channel Mounting Clips



Round Channel End Caps



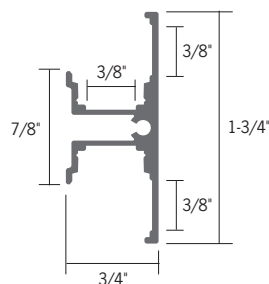
TLACOC4 - Four Round Mounting Clips

Quantity

TLACOE2 - Two Round End Caps, Grey
TLACOE2-B - Two Round End Caps, Black

Quantity

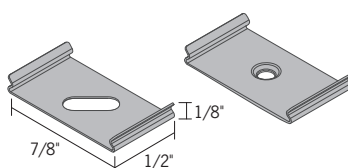
Wall Mount "T" Mounting Channel



TLACT6 - 6 Ft Wall Mount "T" Channel, Aluminum
TLACT6-B - 6 Ft Wall Mount "T" Channel, Black
TLACT6-P - 6 Ft Wall Mount "T" Channel, White

Quantity

Wall Mount "T" Channel Mounting Clips



Wall Mount "T" Channel End Caps



TLACTC4 - Four Wall Mount "T" Channel Mounting Clips

Quantity

TLACTE2 - Two Wall Mount "T" End Caps, Grey
TLACTE2-B - Two Wall Mount "T" End Caps, Black
TLACTE2-P - Two Wall Mount "T" End Caps, White

Quantity

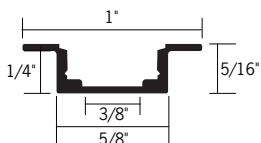
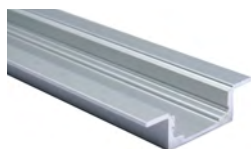
DATE

PROJECT

TYPE

PERFORMANCE LED TAPELIGHT | Mounting Channels and Accessories

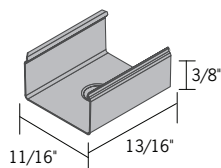
Recessed Mounting Channel



TLACR6 - 6 Ft Recessed Mounting Channel, Aluminum
TLACR6-B - 6 Ft Recessed Mounting Channel, Black

Quantity

Recessed Channel Mounting Clips



TLACRC4 - Four Recessed Mounting Clips

Quantity

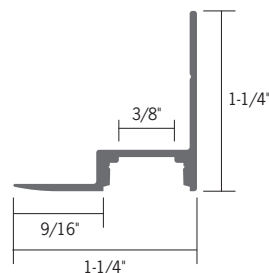
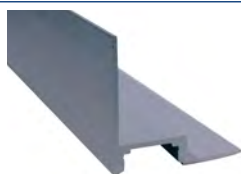
Recessed Channel End Caps



TLACRE2 - Two Recessed End Caps, Grey
TLACRE2-B - Two Recessed End Caps, Black

Quantity

Ceiling Edge Mounting Channel



TLACE6 - 6 Ft Ceiling Edge Channel, Aluminum
TLACE6-B - 6 Ft Ceiling Edge Channel, Black
TLACE6-P - 6 Ft Ceiling Edge Channel, White

Quantity

Ceiling Edge Channel Mounting Clips

Mounting clips are not available for the Ceiling Edge Mount Mounting Channel
 Mount the channel by drilling holes through channel and mounting surface and screwing into place

Ceiling Edge Channel End Caps

End caps are not available for the Ceiling Edge Mount Mounting Channel

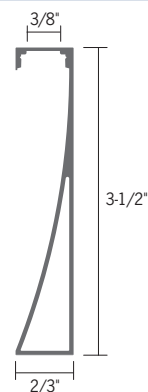
DATE

PROJECT

TYPE

PERFORMANCE LED TAPELIGHT | Mounting Channels and Accessories

Toe Kick Mounting Channel



TLACK6 - 6' Toe Kick Channel, Aluminum
TLACK6-B - 6' Toe Kick Channel, Black
TLACK6-P - 6' Toe Kick Channel, White

Quantity

Toe Kick Channel Mounting Clips

Mounting clips are not available for the Toe Kick Mounting Channel
 Mount the channel by using construction adhesive or 3M™ VHB™ tape

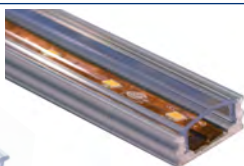
Toe Kick Channel End Caps



TLACKE2 - Toe Kick End Caps, Grey
TLACKE2-B - Toe Kick End Caps, Black
TLACKE2-P - Toe Kick End Caps, White

Quantity

Diffusion Lenses



- Use with mounting channels
- Provides extra protection for the LEDs as well as diffusion to reduce glare

TLALC6 - 6 Ft Clear Lens
TLALF6 - 6 Ft Frosted Lens
TLALCD6 - 6 Ft Double Wide Clear Lens
TLALFD6 - 6 Ft Double Wide Frosted Lens

Quantity

