

## Vintage RLM Luminaires





## Vintage RLM Luminaires

ConTech Lighting's Vintage RLM Series Luminaires are inspired by classic industrial lighting fixtures. While retaining this vintage style, the luminaires have been redesigned with the latest LED technology, modern materials, and finishes.

Classic shaped shades compliment a variety of décors. Multiple mounting options for a wide range of applications. Durable, weather resistant, polyester powder coat finishes - suitable for interior or exterior/wet spaces.

Customizable luminaire styles with endless combinations; perfect for adding an understated vintage twist when illuminating restaurants, retail environments, commercial offices, hospitality, and residences.

*All specifications subject to change without notice.*







Light Source Options



Shade Options



### LED

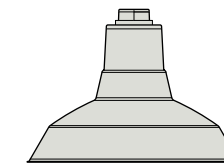
- Up to 3700 Lumens Delivered Output (3000K)
- 120-277VAC Input, 0-10V Dimming
- 2700K, 3000K, 3500K, 4000K; 90+ CRI
- ENERGY STAR® Certified and T24 JA8 Listed
- Powder Coated Cast Aluminum Driver Enclosure with integrated back Mounting Plate included with Mounting Option
- External Mounting Hubs and four (4) integrated conduit entries with pre-installed plugs

### E26 Socket

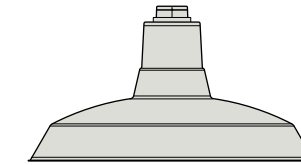
- Accepts one (1) 120VAC E26 Medium Screw Base Edison Lamp; 150W Max Outdoor; 300W Max Indoor
- Powder Coated Cast Aluminum Wall Flange included with Mounting Option
- 3-1/2 Inch center-to-center Mounting Holes on all Wall Flanges

- Durable, weather resistant Powder Coated, Spun Aluminum Shades
- Minimalist designs integrate well with a variety of applications and décors
- Rated for Outdoor/Wet and Indoor Applications

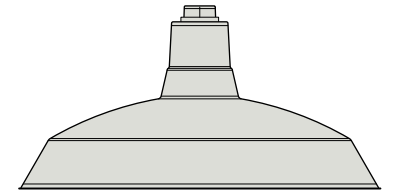
### Warehouse



12 Inch Diameter

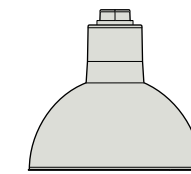


16 Inch Diameter

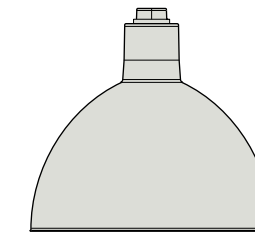


20 Inch Diameter

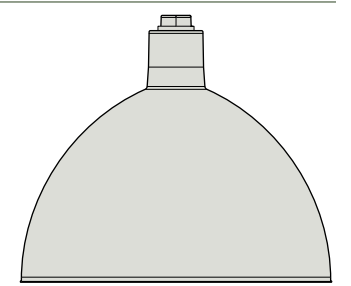
### Deep Bowl



10 Inch Diameter

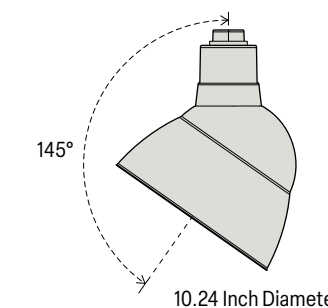


14 Inch Diameter



18 Inch Diameter

### Sign Lighter



10.24 Inch Diameter





## Mounting Options

- Multiple mounting choices for a wide range of applications
- Powder Coated Schedule 40 Carbon Steel Pipe Stems
- Powder Coated Schedule 40 Aluminum Pipe Goosenecks
- All exposed Hardware is Stainless Steel
- Rated for Outdoor/Wet<sup>1</sup> and Indoor Applications

### Pendants



### Goosenecks



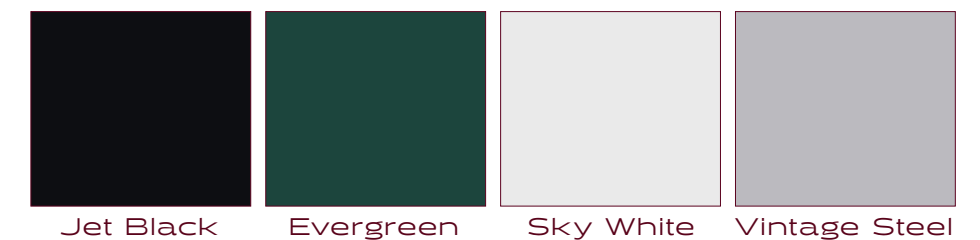
1. Sloped Ceiling configuration is not Wet Location Rated



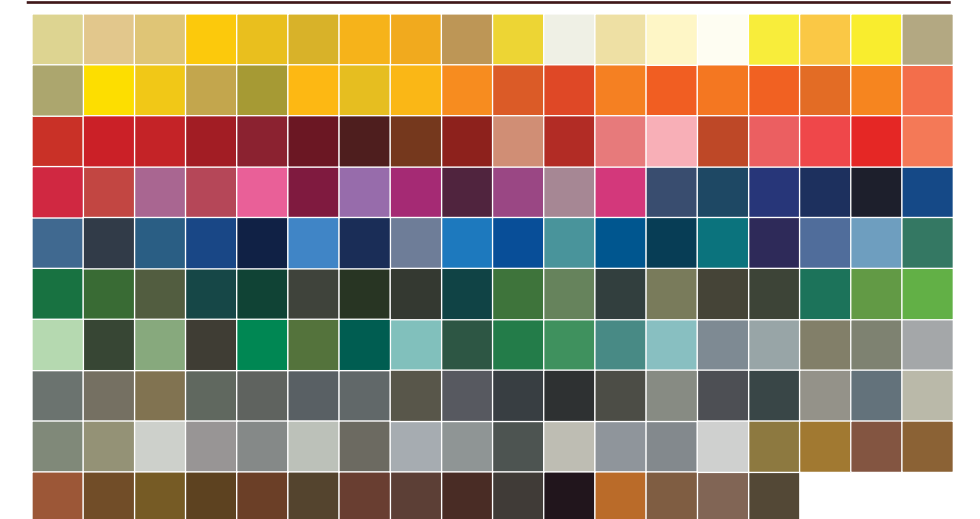
## Finish Options

- Standard finishes are high gloss polyester powder coat with excellent corrosion resistance properties
- Finish selection determines Shade and Mounting Hardware colors
- Interior of all Shades is Sky White, except Vintage Steel which has the same finish on the interior and exterior of Shade
- If using Flexible Cord, Vintage Steel, Jet Black and Evergreen finishes come with a Black Cord; Sky White finish has a White Cord

### Standard Finishes



### Custom Finishes



177 RAL Colors

Custom Finishes require additional lead time and extra charge

ConTech Lighting combines the latest energy efficient technology and design styles to create an extensive range of attractive and sustainable luminaires, including many that can't be found anywhere else. We believe that lighting can be environmentally responsible and energy efficient while providing high-quality performance and outstanding aesthetic design.

Our responsive, personalized customer focus and market expertise represents an oasis of outstanding service in an industry that values it, but frequently doesn't receive it. We have an experienced staff of sales professionals to assist you with your projects from concept to completion.

