



gallery **XL**

PERFORMANCE LED TRACK LUMINAIRE

# gallery XL

The Gallery XL is a high performance luminaire delivering high outputs and superior beam control.

With a variety of LED options, the Gallery XL will fit into almost any space.



- clean aesthetics, simple form
- high performance
- multiple beam distributions
- consistent color rendering

# applications

## GALLERIES & MUSEUMS

High Color Rendering options with a variety of beam angles to highlight items of varied colors, size and form



## GROCERY

High efficacy track luminaire with multiple beam options to bring focus to produce, end-caps and other high volume merchandise areas



## RETAIL

Varied outputs, color temperatures, beam angles and track adapters to fit into any merchandising application



## CONFERENCE CENTERS

Flexibility and performance for environments with dynamic uses and light level needs



# field changeable optic system



## features



### Precision Adjustment and Aiming

- 0° to 100° Vertical Tilt with Locking Mechanism and Visible Angle Indication
- 365° Horizontal Rotation



### Mono-Point Canopy Mounting Option

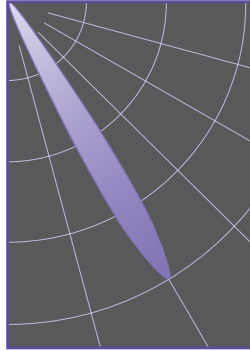
- Ideal for single head ceiling or wall mounting

# optic system detail

## VERY NARROW SPOT

Beam Angle: **10.1°**  
Field Angle: **18.4°**  
Delivered Lumens: **1600**  
CBCP: **39904**

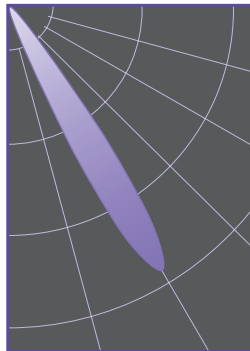
*Available for CTL940 - CTL943*



## NARROW SPOT

Beam Angle: **12.5°**  
Field Angle: **22.4°**  
Delivered Lumens: **2000**  
CBCP: **34509**

*Available for CTL940 - CTL944*



## MEDIUM

Beam Angle: **24.2°**  
Field Angle: **53.8°**  
Delivered Lumens: **4400**  
CBCP: **16197**

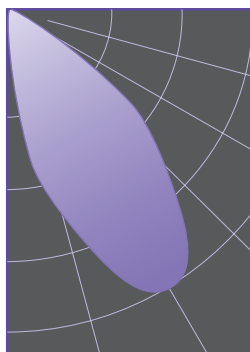
*Available for CTL940 - CTL945*



## FLOOD

Beam Angle: **44.2°**  
Field Angle: **64.9°**  
Delivered Lumens: **4500**  
CBCP: **8947**

*Available for CTL940 - CTL945*



## WIDE FLOOD

Beam Angle: **51.0°**  
Field Angle: **82.8°**  
Delivered Lumens: **4600**  
CBCP: **6210**

*Available for CTL940 - CTL945*



# ordering information

Five (5) outputs ranging from 1400 to 4400 lumens

Three (3) LED Platforms:

- Standard Series with a CRI of 80 or 90+
- Xicato® XOB Series with a CRI of 95
- Warm Dim COB Series transitions color temperature from 3000K to 1800K when dimmed
- Consult product specification sheets for these alternate ordering options

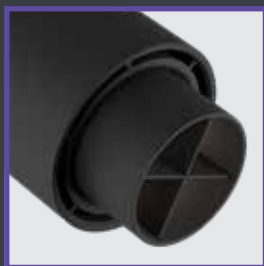


| LED SERIES   | BEAM  | CRI/CCT   | DIMMING                           | FINISH  |
|--|---|---|-----------------------------------|---|
| Lumen values are approximate, based on 3000K CCT/Medium Beam performance | <b>VN<sup>1</sup></b> - Very Narrow Spot<br>10° Beam, 18° Field | 83 CRI<br><b>27K</b> - 2700K<br><b>3K</b> - 3000K<br><b>35K</b> - 3500K<br><b>4K</b> - 4000K      | <b>D</b> - 120V TRIAC/ELV Dimming | <b>B</b> - Matte Black<br><b>P</b> - Matte White<br><b>S</b> - Matte Silver |
| <b>CTL940</b> - 13W<br>1407 Lm   | <b>NS<sup>2</sup></b> - Narrow Spot<br>13° Beam, 22° Field      | 90+ CRI<br><b>27KC</b> - 2700K<br><b>3KC</b> - 3000K<br><b>35KC</b> - 3500K<br><b>4KC</b> - 4000K |                                   |   |
| <b>CTL941</b> - 20W<br>2100Lm  | <b>ME</b> - Medium<br>24° Beam, 54° Field                       |   |                                   |   |
| <b>CTL942</b> - 29W<br>2935Lm  | <b>FL</b> - Flood<br>42° Beam, 64° Field                        |   |                                   |   |
| <b>CTL943</b> - 38W<br>3633Lm  | <b>WF</b> - Wide Flood<br>51° Beam, 83° Field                   |   |                                   |   |
| <b>CTL944</b> - 42W<br>3994Lm  |   |   |                                   |   |
| <b>CTL945</b> - 49W<br>4441Lm  |   |   |                                   |   |

1. Very Narrow Spot (VN) Optic only available up to 38W (LED Series 3)  
2. Narrow Spot (NS) Optic only available up to 42W (LED Series 4)

The Gallery XL can be mounted on numerous industry Track Systems; consult product specification sheets or factory for available Track Adapters

## accessories



**FA-94**

Snoot with  
Optional  
Cross Blades



**BD-94**

Barn Doors



**LA-45**

Honeycomb  
Louver

### LF20-

Tempered Glass Lenses

- 73** - Spread Lens
- LS** - Linear Spread Lens
- SL** - Soft Light
- SOL** - Solite
- UV** - Optivex UV Filter
- A** - Amber
- B** - Blue
- CL** - Clear
- DPE** - Dichroic Peach
- G** - Green
- LB** - Light Blue
- R** - Red
- RO** - Rose
- Y** - Yellow

For more information, visit [www.contechlighting.com](http://www.contechlighting.com)

# track system options



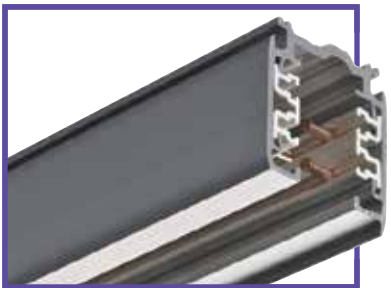
## SINGLE- & TWO-CIRCUIT/ONE NEUTRAL TRACK

- 120V Commercial Grade Track Sections
- Use with ConTech's Recessed Track Housing System for minimal appearance
- Compatible with standard ConTech CTL prefix Track Luminaires



## LUX BEAM SYSTEM

- ConTech 120V Single- and Two-Circuit/One Neutral Track Sections housed within an extruded aluminum housing
- Ideal for large Suspended Grid Systems
- Compatible with standard ConTech CTL prefix Track Luminaires



## TWO-CIRCUIT/TWO-NEUTRAL NORDIC TRACK

- Available for 120V and 277V; ideal for dimming intensive applications
- Independent Neutrals enable greater power capacity and ensure reliable dimming on two-circuit applications
- Compatible with ConTech NCTL prefix Track Luminaires



## 0-10V DIMMING TRACK

- Available for 120V and 277V: seven (7) conductor surface track for two circuits, plus data bus and for three circuit applications
- Data Bus (+/-) for use with building 0-10V Dimming Systems
- Compatible with ConTech ETL prefix Track Luminaires

## complimentary solutions



## gallery

### CTL84C SERIES

Standard LED Array

### CTL84X SERIES

Choice of three (3) Xicato LED Modules:  
Standard, Artist and Vibrant Series

- Accent or Wall Wash Housing
- Various beam distributions with field interchangeable optics
- Full line of Accessories
- TRIAC/Forward Phase and ELV/Reverse Phase dimming

## QUALITY

Quality is a part of every facet of our work; from component selection, design approach, process evaluation, design and manufacturing, testing, and packaging. ConTech Lighting is defined by its quality: it is important that our customers can trust our products to provide consistent and long service.

## SERVICE

Our experienced team stands ready to provide responsive and personalized support that you can trust. We understand the value of this and welcome you to lean on us Monday through Friday, 7:30am-5:30pm CST at 847.559.5500.

## MARKET EXPERTISE

Each project can bring its own unique challenges. Our sales professionals and in-house teams are ready to support you from concept to completion. We want you to not only value our products but the complete experience of working with ConTech.

## LIGHTING EXPERIENCE

Lighting is more than numbers on a specification sheet and changes are constantly developing. Visit one of our facilities to experience the power of illumination to make your space more productive, aesthetically pleasing and more energy efficient. Visit our corporate Inspiration Center in Northbrook, IL or one of our Leviton LIVE Centers in New Orleans, LA or Chicago, IL.